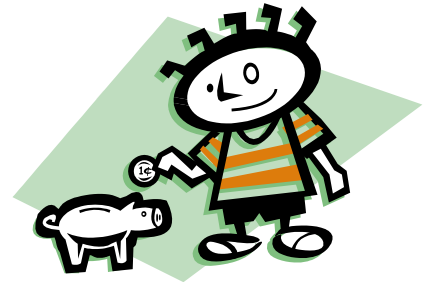


# FAQ

## Frequently Asked Questions about Money \$



### **What does the Family Care Rate (Maintenance) cover?**

This covers the regular ongoing costs of raising a child per month.

- Food, shelter and clothing
- Routine wear and tear on your home.
- Transportation- 325 km/ month is included in the family care rate.
- School costs.
- Recreation, vacation and summer camps.

Note- Prescription, medical, dental and vision related costs are usually covered by Medical Service Plan (M.S.P.). If they are not covered by discuss this with the child's social worker, before you pay.

### **Who pays for daycare costs if they are needed?**

The Child Care Subsidy covers 80% of day care costs. You may be expected to pay the parent portion of day care costs for children in care (20%). Check with the child's social worker about this and the application process.

### **How much is the family care rate?**

The family care rate (2010) is:

Age 11 & under	\$803.81/month
Age 12 - 19	\$909.95/month

These amounts are paid to the Foster Parent only for the days that the child is in the home. If a child stays with you less than the full month the amount will be adjusted accordingly.

### **Do I need to keep receipts?**

It is a good idea to keep receipts and a monthly budget. MCFD may ask you to justify your need should extraordinary expenses occur.

### **What about extra expenses?**

Discuss any extra expenses with the child's social worker before you spend.

## How can I budget?

- A number of different budget formats are available from your Foster Parent Coordinator.
- You should not end up out of pocket as a result of your work as a Foster Parent.
- Stay within the amount given.
- You may save from one month and spend it the next. For example, save over the summer to buy school clothes and supplies in September.
- Speak to your social worker if you need help managing costs.



This is only a guideline to help you with your budgeting- every child's costs will be different

<b>GUIDELINE TO THE FAMILY CARE RATE 2010*</b>	<b>GUIDELINE ONLY</b>	<b>GUIDELINE ONLY</b>
<b>Basic Family Care Costs (per month)</b>	<b>Ages 0-11 years</b>	<b>Ages 12-19 years</b>
Food	133.34	183.05
Housing	149.89	182.18
Transportation	63.88	75.89
Personal Needs	15.82	19.80
Recreation	36.00	37.96
Clothing	81.50	91.97
<b>Sub-total</b>	<b>480.43</b>	<b>590.85</b>
<b>Additional Family Care Costs</b>	<b>Ages 0-11 years</b>	<b>Ages 12-19 yrs</b>
Education	27.21	32.65
Babysitting/ other	86.93	58.35
Transportation	62.81	61.95
Personal Spending	40.64	52.30
Gifts/ Activities	62.81	61.95
Equipment/ Recreation	42.98	51.90
<b>Sub-total</b>	<b>323.39</b>	<b>319.10</b>
<b>TOTAL MAINTENANCE (per month)</b>	<b>803.81</b>	<b>909.95</b>